

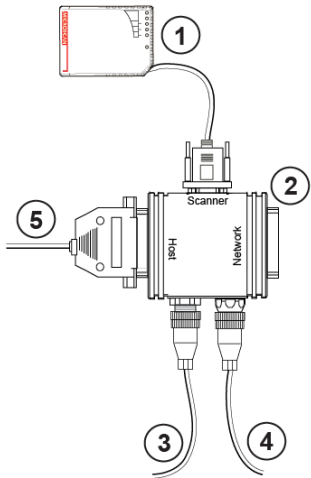
MS-9 - CONFIGURATION



MICROSCAN®

Stand-Alone

This is the basic setup for a single MS-9 Laser Scanner.

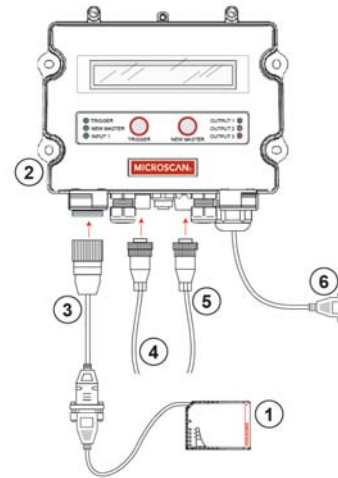


System Matrix

Product	Part Number	Description
(1) MS-9	FIS-0911-XXXXG	Laser Scanner
(2) IB-131	99-000018-01	Interface Box
(3) Power Supply	97-100004-15	90-264 VAC, 24VDC, USA/Euro plug
(4) Object Detector	99-000017-01	Photo Sensor, Visible, NPN, Dark On
(5) Communication Cable	61-300026-03	25-pin plug to 9-pin socket, 6 ft.

Stand-Alone with MS-Connect 210

This is the basic setup for a single MS-9 Laser Scanner and an MS-Connect 210 Connectivity Box.

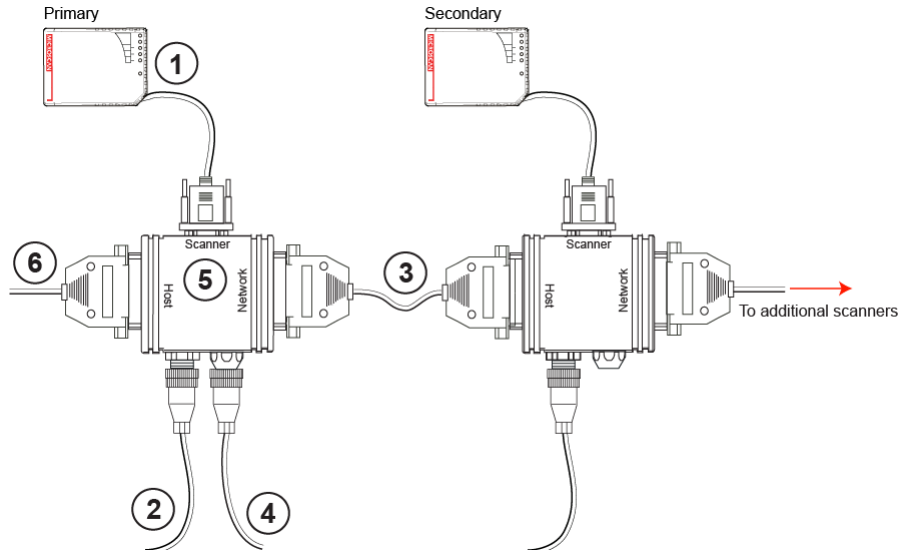


System Matrix

Product	Part Number	Description
(1) MS-9	FIS-0911-XXXXG	Laser Scanner
(2) MS-Connect 210	FIS-0210-000XG	Connectivity Box
(3) Reader Cable	61-000127-01	MS-9 to MS-Connect 210 cable, 6 ft.
(4) Power Supply	97-100004-15	90-264 VAC, 24VDC, USA/Euro plug
(5) Object Detector	99-000017-02	Photo Sensor, Visible, NPN, Light On
(6) Host Cable	61-000105-01	MS-Connect 210 to host, user-stripped to 9-pin (included)

Daisy Chain

A primary scanner is linked directly to the host. Secondary scanners are linked in tandem. Data is sent from each secondary scanner to the primary scanner, and from the primary scanner to the host.



System Matrix

Product	Part Number	Description
(1) MS-9	FIS-0911-XXXXG	Laser Scanner
(2) Power Supply	97-100004-15	90-264 VAC, 24VDC, USA/Euro plug
(3) Daisy Chain Cable	61-100029-03	IB-131 to IB-131, 1 ft. (0.3 meters)
(4) Object Detector	99-000017-01	Photo Sensor, Visible, NPN, Dark On
(5) IB-131	99-000018-01	Interface Box
(6) Communication Cable	61-300026-03	25-pin plug to 9-pin socket, 6 ft.