

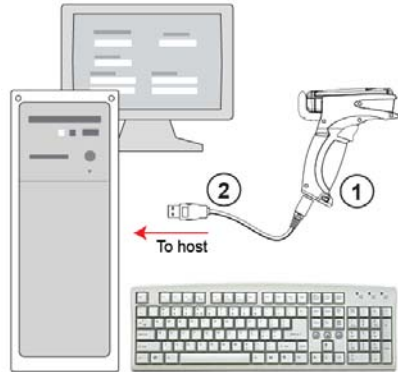
MS-Q - CONFIGURATION



MICROSCAN.

USB

A single MS-Q communicates with the host using a USB connection.

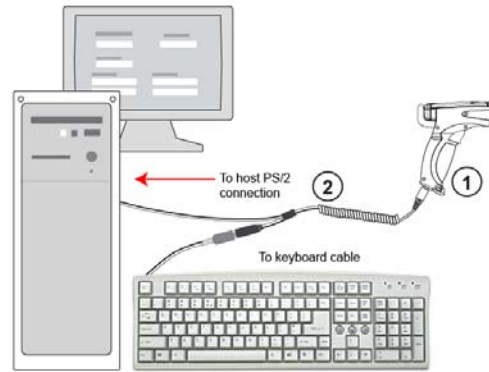


System Matrix

Product	Part Number	Description
(1) MS-Q Imager	FIS-6100-XXXXG FIS-6150-XXXXG	MS-Q Quadrus or MS-Q Basic
(2) USB Cable	Included	6 ft., USB

PS/2

A single MS-Q communicates with the host using a PS/2 connection.

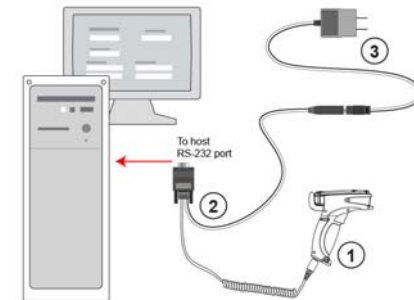


System Matrix

Product	Part Number	Description
(1) MS-Q Imager	FIS-6100-XXXXG FIS-6150-XXXXG	MS-Q Quadrus or MS-Q Basic
(2) Keyboard Wedge Cable	60-000018-03	6', coiled, PS/2

RS-232

A single MS-Q communicates with the host using an RS-232 connection.

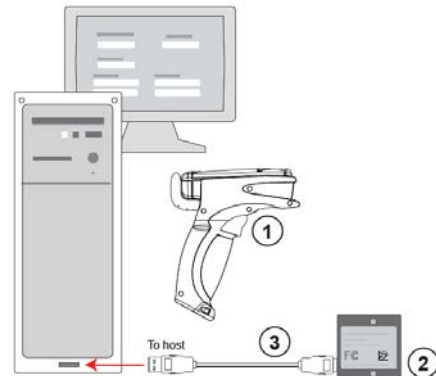


System Matrix

Product	Part Number	Description
(1) MS-Q Imager	FIS-6100-XXXXG FIS-6150-XXXXG	MS-Q Quadrus or MS-Q Basic
(2) RS-232 Kit	98-000074-XX	Kit, RS-232 interface, 8 ft. coiled cable, Power Supply
(3) Power Supply	Included with Kit	Power Supply with Wall Mount, 90-264 VAC, +5VDC, 1.5A

Bluetooth (Wireless)

The MS-Q communicates directly with the host using a Bluetooth modem.

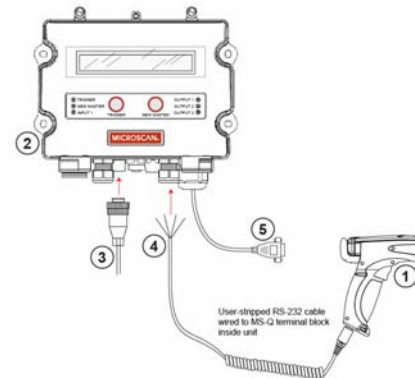


System Matrix

Product	Part Number	Description
(1) MS-Q Imager	FIS-6100-XXXXG; FIS-6150-XXXXG	MS-Q Quadrus or MS-Q Basic
(2) USB Modem Kit (default option) RS-232 Modem Kit (available option; not shown)	98-000076-10 98-000076-07, -08, -09	Kit, Modem, USB Kit, Modem, RS-232
(3) USB Cable	Included with Kit	6 ft., USB

RS-232 with MS-Connect 210

The MS-Q is wired directly to a terminal block inside the MS-Connect 210 box.



System Matrix

Product	Part Number	Description
(1) MS-Q Imager	FIS-6100-XXXXG; FIS-6150-XXXXG	MS-Q Quadrus or MS-Q Basic
(2) MS-Connect 210	FIS-0210-XXXXG	Connectivity Box
(3) Power Supply	97-100004-15	Power Supply, 90-264 VAC, 24VDC USA/Euro plug
(4) Reader Cable	61-000066-02	MS-Q to MS-Connect 210, 5 meters, coiled
(5) Host Cable	61-000105-01	User-stripped, RS-232, 9-pin